



**SEASON**

**2011  
2012**

**new**

**Blue Man Group**

**SHREK**

**SOUTH PACIFIC**

**Young Frankenstein**

**IN THE HEIGHTS**

**Plus ACT II Mamma Mia! & PETER PAN**

# the new season 2011-2012

## Young Frankenstein

September 27 & 28, 2011     Curtain at 7:30 p.m.

**2 performances!** IT'S ALIVE! A wickedly inspired re-imagining of the Frankenstein legend based on Mel Brooks' classic comedy masterpiece, the story follows bright young Dr. Frankenstein (that's Fronkensteen) as he attempts to complete his grandfather's masterwork and bring a corpse to life. With such memorable tunes as "The Transylvania Mania," "He Vas My Boyfriend" and "Puttin' On The Ritz," **YOUNG FRANKENSTEIN** is scientifically-proven, monstrously good entertainment and the only place you'll witness a singing and dancing laboratory experiment in the largest tuxedo ever made.



## In the Heights

October 25 & 26, 2011     Curtain at 7:30 p.m.

**2 performances!** **IN THE HEIGHTS** tells the universal story of a vibrant community in Manhattan's Washington Heights — a place where the coffee from the corner bodega is light and sweet, the windows are always open, and the breeze carries the rhythm of three generations of music. It's a community on the brink of change, full of hopes, dreams and pressures, where the biggest struggles can be deciding which traditions you take with you, and which ones you leave behind.

## Shrek, the Musical

February 7, 8 & 9, 2012     Curtain at 7:30 p.m.

**3 performances!** Based on the Oscar®-winning DreamWorks film, **SHREK, THE MUSICAL** brings the hilarious story of everyone's favorite ogre to dazzling new life on the stage. In a faraway kingdom turned upside down, things get ugly when an unseemly ogre — not a handsome prince — shows up to rescue a feisty princess. Throw in a donkey who won't shut up and over a dozen other fairy tale misfits, and you've got the kind of mess that calls for a real hero. Luckily, there's one on hand . . . and his name is Shrek. Full of all-new songs, great dancing and breathtaking scenery, **SHREK, THE MUSICAL** is part romance, part twisted fairy tale and all irreverent fun for everyone.



## South Pacific

March 6 & 7, 2012     Curtain at 7:30 p.m.

**2 performances!** Set on a tropical island in the Pacific during World War II, a U.S. Navy nurse falls in love with a local plantation owner. This classic Rodgers and Hammerstein musical, the winner of seven 2008 Tony Awards, features one of the most romantic scores of all time and is also a deeply felt drama. Its portrayal of Americans stationed in an alien culture in wartime is as relevant today as when it first thrilled audiences in 1949. The first Broadway revival of **SOUTH PACIFIC** played to sold-out houses for over two years.



# Blue Man Group

Great family show!

June 5, 6 & 7, 2012     Curtain at 7:30 p.m.

**3 performances!** One of the great things about the nationally acclaimed **BLUE MAN GROUP** is that it appeals to all ages. Kids will enjoy the lights, color and spectacle. Adults enjoy the humor, social commentary and depth of the character. Even the hardened theatre critic finds a deeper message behind the fun and mess. We encourage casual attire for the show — especially if you sit in the “poncho” section. Jeans and sneakers are ideal, but call early for information on special “pit” tickets!

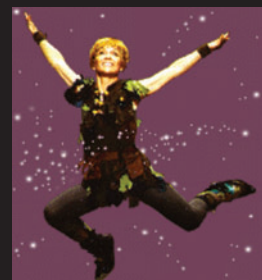
**“Pit” tickets available! Call now!**

Great family show!

## Peter Pan, with Cathy Rigby

November 15, 16 & 17, 2011     Curtain at 7:30 p.m.

**3 performances!** Olympic gymnast Cathy Rigby takes flight in her Tony-nominated and Emmy Award-winning role as the boy who won't grow up, Peter Pan. Broadway Theatre League is one of the first venues for this all-new production of the musical **PETER PAN** as it begins a national tour followed by a possible return to Broadway in summer 2012.



# Act II

**2 Extra Shows for 2011-2012!**

**Act II tickets on sale now for subscribers!**

## Mamma Mia!

January 17 & 18, 2012     Curtain at 7:30 p.m.

**2 performances!** A mother. A daughter. 3 possible dads. And a trip down the aisle you'll never forget. Over 45 million people worldwide have fallen in love with the characters, the story and the music from super-group **ABBA** that make **MAMMA MIA!** the ultimate feel-good show!



## Subscriber Benefits

**Advance Sale Tickets to ACT II Shows** Subscribers may purchase tickets to any ACT II show before they go on sale to the general public. You'll receive \$5 off each ticket for that show, and you may also get the same seats as your Season Seats—or as close as possible.

**Purchasing Extra Tickets to All Shows** Subscribers may buy additional tickets to any Regular Season or ACT II show before they go on sale to the general public. This way you'll be able to purchase tickets as close as possible to your Season Seats. You'll receive \$5 off for each ticket to an ACT II show.

**Easy Payment Plan** Break the total payment of your subscription into three easy payments, each with a modest handling fee.

- First installment is payable upon Subscriber renewal = 40% of the total plus a \$6.00 handling fee.
- Second installment is due June 30, 2011 = 30% of the total plus a \$6.00 handling fee.
- Third installment is due August 1, 2011 = 30% of the total plus a \$6.00 handling fee.

Back by popular demand!

**Pre-Show Dinner Club** and **Cast & Crew Party** Enjoy light dinner fare with a drink before each Regular Season show in the Romano Room at the Stanley Theatre. Catered by some of the area's finest restaurants and chefs, the Pre-Show Dinner Club cost per Subscriber is \$150 for the entire 5-show season or \$35 per person on an individual show basis (tax and gratuity included). After the first night's performance of each Regular Season show, meet the Cast and Crew in the Romano Room for a catered post-show party. The cost is \$75 per subscriber for 5 shows (non-transferable/non-refundable, tax and gratuity included). Feel free to bring a guest to the Cast and Crew Party for an extra cost of \$20 per person for the nights they attend.

Subscribe or renew online today at [www.BroadwayUtica.com](http://www.BroadwayUtica.com)



# 2011-2012 Season Subscription Pricing

ALL SHOWS AND DATES ARE SUBJECT TO CHANGE

Prices shown are "per person" and include all fees.



## General Subscription Prices\*

<b>Premium Seating</b>	<b>\$231.00</b>	<b>Only \$46.20 per show!</b>
<b>A Seating</b>	<b>\$216.00</b>	<b>Only \$43.20 per show!</b>
<b>B Seating</b>	<b>\$196.00</b>	<b>Only \$39.20 per show!</b>
<b>C Seating</b>	<b>\$176.00</b>	<b>Only \$35.20 per show!</b>
<b>D Seating</b>	<b>\$156.00</b>	<b>Only \$31.20 per show!</b>
<b>E Seating</b>	<b>\$136.00</b>	<b>Only \$27.20 per show!</b>

## Student and Senior (65+) Subscription Prices\*

<b>B Seating</b>	<b>\$171.00</b>	<b>Only \$34.20 per show!</b>
<b>C Seating</b>	<b>\$151.00</b>	<b>Only \$30.20 per show!</b>

## Non-Subscriber Prices (Per Show)

<b>Premium Seating</b>	<b>\$60.00</b>
<b>A Seating</b>	<b>\$55.00</b>
<b>B Seating</b>	<b>\$50.00</b>
<b>C Seating</b>	<b>\$45.00</b>
<b>D Seating</b>	<b>\$40.00</b>
<b>E Seating</b>	<b>\$35.00</b>

## Pre-Show Dinner Club

<b>Per Subscriber</b>	<b>\$150.00</b>	<b>For 5 Regular Season shows</b>
<b>Per Subscriber</b>	<b>\$35.00</b>	<b>Per individual show</b>

## Cast & Crew Post-show Party

<b>Per Subscriber</b>	<b>\$75.00</b>	<b>For 5 Regular Season shows</b>
<b>Per Guest</b>	<b>\$20.00</b>	<b>Per individual show</b>

## Terms of Sale

All Shows and Dates are subject to change. All tickets are sold with a NO REFUND policy. Subscribers may exchange tickets for another performance of the same show subject to availability. There is a \$2.00 per ticket exchange fee.

\*Each Subscription price above is "per person" and includes all handling fees plus the Stanley Restoration fee. See inside for details on the Easy Payment Plan.

All performances at

**The Stanley**

Ask about **Group Sales**  
for all Broadway  
Theatre League shows!

Subscribe or renew online today at  
**www.BroadwayUtica.com**

258 Genesee Street, Utica, NY 13502

315-724-7196 email: [Info@BroadwayUtica.com](mailto:Info@BroadwayUtica.com)